

**GUAM MEMORIAL HOSPITAL AUTHORITY
850 GOV. CARLOS G. CAMACHO ROAD
TAMUNING, GUAM 96913
PHONE: 671-647-2165
EMAIL: materials.mgmt@gmha.org**

TRANSMITTAL SHEET

TO: Prospective Bidder

FROM: Hospital Materials Management Administrator

DATE: October 4, 2024

SUBJECT: **GMHA IFB 023-2024 Removal and Replacement of SNF Chilled Water Lines at Nursing Wings A, B, & C Amendment No.2**

PAGES: 19 including cover sheet

NOTES:

An acknowledgement via a return email would be appreciated as soon as possible.

DATE / VENDOR ACKNOWLEDGEMENT

FACSIMILE CONFIDENTIALITY NOTICE

These documents accompanying this transmission contain confidential information that is legally privileged. This information is intended only for the use of the individual or entity named above. The authorized recipient of this information is prohibited from disclosing this information to any other party unless required to do so by law or regulation and is required to destroy the information after its stated need has been fulfilled.

If you are not the intended recipient, you are hereby notified that any disclosure, copying, distribution, or action taken in reliance on the contents of these documents is strictly prohibited. If you have received this information in error, please notify the sender immediately and arrange for the return or destruction of these documents.



GUAM MEMORIAL HOSPITAL AUTHORITY

ATURIDÁT ESPETÁT MIMURIÁT GUÅHÅN

850 Governor Carlos Camacho Road, Tamuning, Guam 96913
Operator: (671) 647-2330 or 2552 | Fax: (671) 649-5508



AMENDMENT #2

GMHA IFB 023-2024

Removal and Replacement of Skilled Nursing Facility(SNF) Chilled Water Lines (CHWL) at Nursing Wings A, B, & C

This amendment is issued for the following:

To Include Attachment A to Bid Packet.

Please acknowledge receipt of this Amendment by signing and sending it back to Materials Management via email to materials.mgmt@gmha.org.

If you have any questions, please feel free to address your letter to Lillian Perez-Posadas MN, RN, and email it to Materials Management at materials.mgmt@gmha.org.

Sincerely;

DOLORES PANGELINAN
Hospital Materials Management Administrator

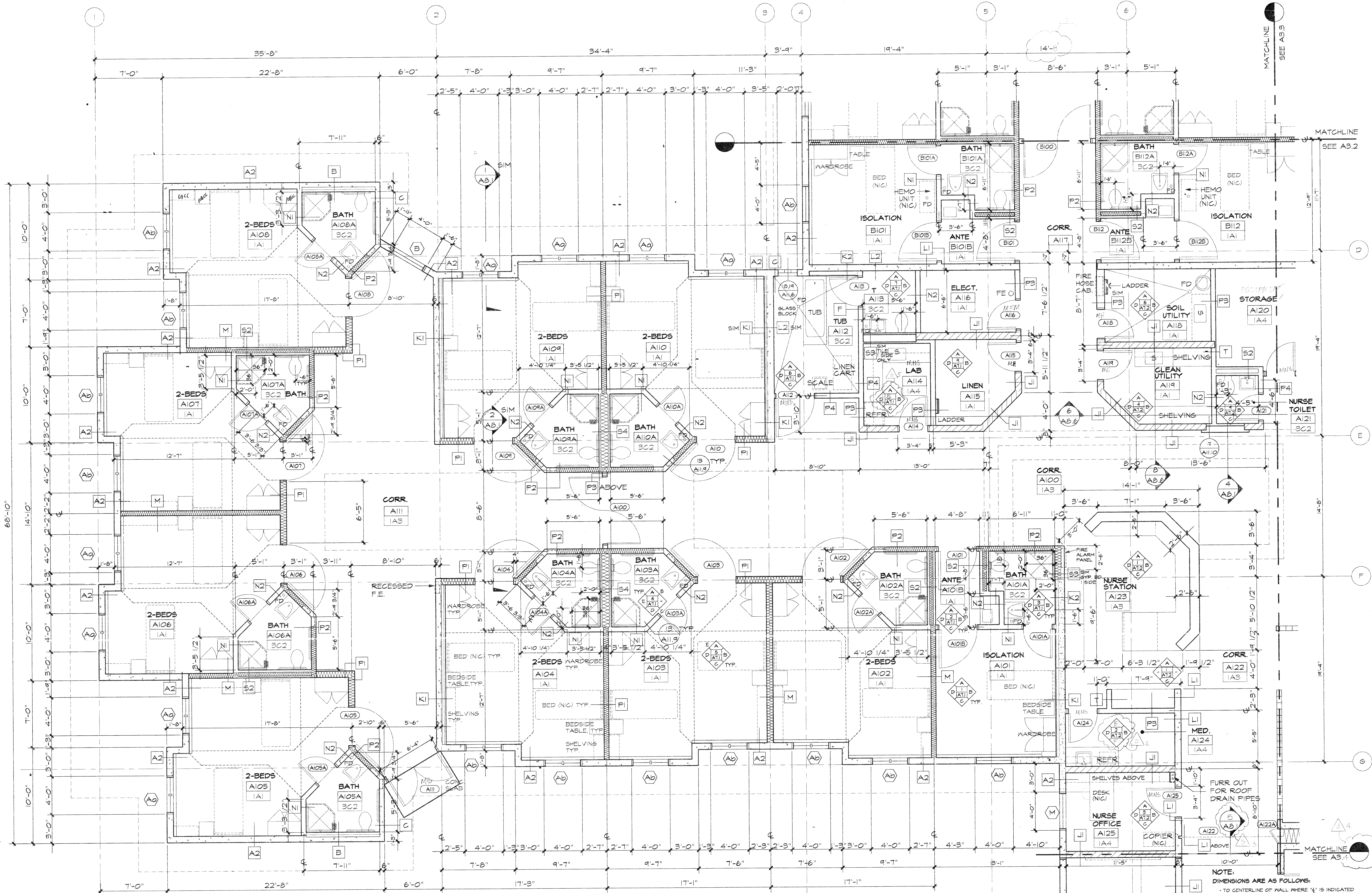
ACKNOWLEDGMENT:

PRINT NAME

SIGNATURE

DATE

REVISIONS		
No.	Description	Date
1	APPENDUM #3	1-14-93



1 DETAILED PLAN - GROUND FLOOR A-WING
SCALE: 1/4"=1'-0"

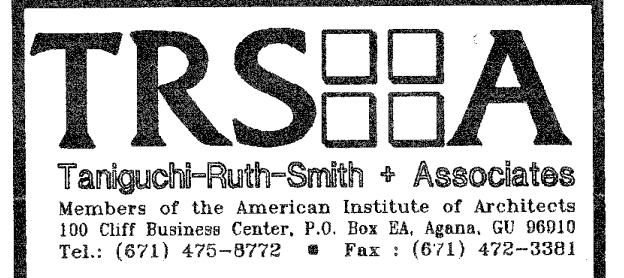
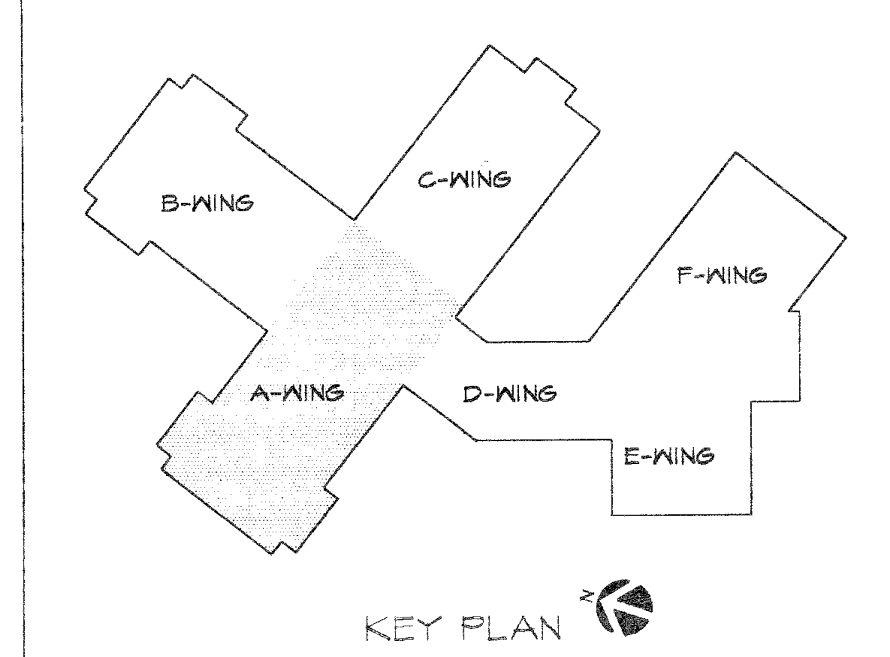
PARTITION TYPES

- TYPICAL CONCRETE WALL. SEE STRUCT. DWS. SEE WALL TYPE FOR FINISH.
- TYPICAL CONCRETE UNIT MASONRY WALL. SEE STRUCT. DWS. SEE WALL TYPE FOR FINISH.
- TYPICAL METAL STUD WALL. SEE WALL TYPE FOR FINISH.
- TYPICAL METAL STUD CHASE WALL. SEE WALL TYPE FOR FINISH.
- TYPICAL METAL STUD WALL W/ACOUSTIC INSUL. SEE WALL TYPE FOR FINISH.

ROOM FINISH & MATERIALS CODE LIST

1 VINYL TILE / RUBBER BASE	A PAINT, ALL WALLS	1 PTD. GYP. BD. PTD.
2 CARPET / RUBBER BASE	B PAINT, 3 WALLS	2 MR. GYP. BD. PTD.
3 CER. TILE / CER. TILE CFT-1	C CER. TILE CMT-1	3 SUSP. ACoust. TILE #1 PTD. 4"X4" (AS NOTED ON PLAN)
4 SEALED CONC.	D PTD. MR. GYP. BD. CER. TILE TO 4'-0" CMT-1	4 SUSP. ACoust. TILE #2
5 PORCELAIN CER. TILE & CARPET / WOOD BASE	E	5 PTD. CONC.
6 SEAMLESS FLOORING	F	6 WOOD PANELING
7 PORCELAIN CER. TILE / WOOD BASE		7 SUSP. ACoust. TILE #3

NOTE:
DIMENSIONS ARE AS FOLLOWS:
- TO CENTERLINE OF WALL WHERE '1/2' IS INDICATED
- TO FACE OF CONCRETE WALLS
- TO FACE OF PLASTER AT CMU WALLS
- TO FACE OF FINISH SURFACE AT STUD OR FURR WALLS
- TO MASONRY ROUGH OPENINGS



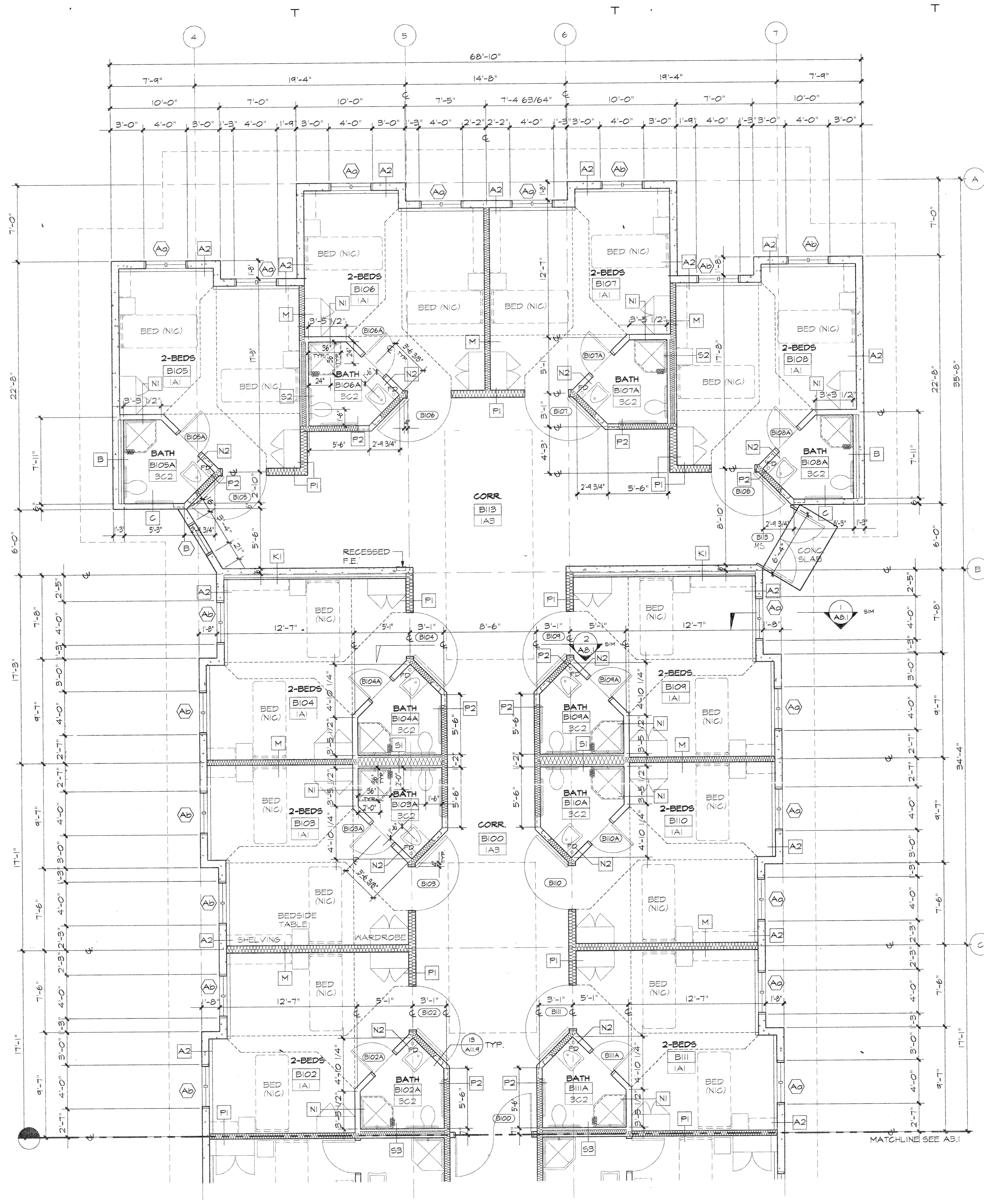
Architecture
Planning
Interior Design



Project:
GMH
LONG TERM
CARE FACILITY

Title:
DETAILED PLAN -
GROUND FLOOR A-WING

Designed: RS
Drawn: Ian
Checked: VT / MGS
Supv: RS
Scale: 1/4"=1'-0"
Date: 2 AUG 93
Project No. 9116 AutoCAD File A3-1
Drawing No. A3.1
Sheet No. 1 of 1

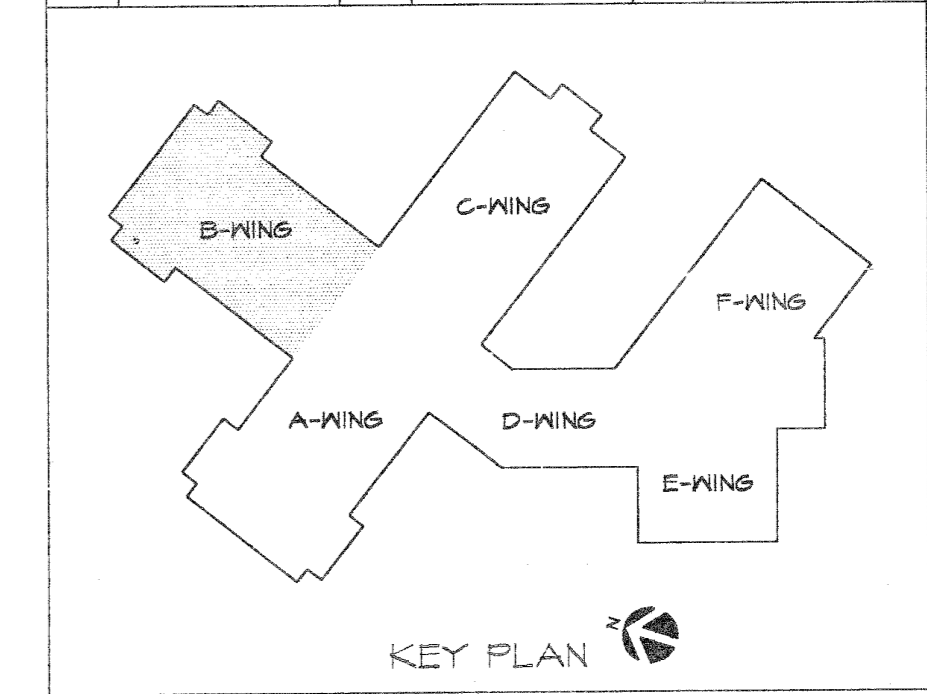


1 DETAILED PLAN - GROUND FLOOR B-WING
SCALE: 1/4"=1'-0"

NOTE:
DIMENSIONS ARE AS FOLLOWS:
• TO CENTERLINE OF WALL WHERE "C" IS INDICATED
• TO FACE OF CONCRETE WALLS
• TO FACE OF PLASTER AT CMU WALLS
• TO FACE OF FINISH SURFACE AT STUD OR FURRED WALLS
• TO MASONRY FINISH OPENINGS

PARTITION TYPES	
	TYPICAL CONCRETE WALL. SEE STRUCT. DINGS. SEE WALL TYPE FOR FINISH.
	TYPICAL CONCRETE UNIT MASONRY WALL. SEE STRUCT. DINGS. SEE WALL TYPE FOR FINISH.
	TYPICAL METAL STUD WALL. SEE WALL TYPE FOR FINISH.
	TYPICAL METAL STUD CHASE WALL. SEE WALL TYPE FOR FINISH.
	TYPICAL METAL STUD WALL W/ACOUSTIC INSUL. SEE WALL TYPE FOR FINISH.

ROOM FINISH & MATERIALS CODE LIST			
1 VINYL TILE / RUBBER BASE	A PAINT ALL WALLS	1 PTD. GYP. BD.	
2 CARPET / RUBBER BASE	B PAINT B WALLS	2 AIR. GYP. BD. PTD.	
3 CER. TILE / CER. TILE CFT-1	C CER. TILE CFT-1	3 SUSP. ACoust. TILE #2	
4 SEALED CONC.	D PTD. AIR. GYP. BD. / CER. TILE TO 4'-0" CFT-1	4 SUSP. ACoust. TILE #2	
5 PORCELAIN CER. TILE & CARPET / WOOD BASE	E PTD. AIR. GYP. BD. / CER. TILE TO 4'-0" CFT-1	5 PTD. CONC.	
6 SEAMLESS FLOORING	F	6 WOOD PANELING	
7 PORCELAIN CER. TILE / WOOD BASE		7 SUSP. ACoust. TILE #3	



REVISIONS		
No.	Description	Date

TRSA
Tanjung-Ruth-Smith & Associates
Members of the American Institute of Architects
200 East Broadway Center, 10th Floor, Suite 1000
Tel.: (671) 475-9772 • Fax: (671) 475-3881

Architecture
Planning
Interior Design

CERTIFICATE
No. 177
TERRITORY OF GUAM
DATE: 8/2/93

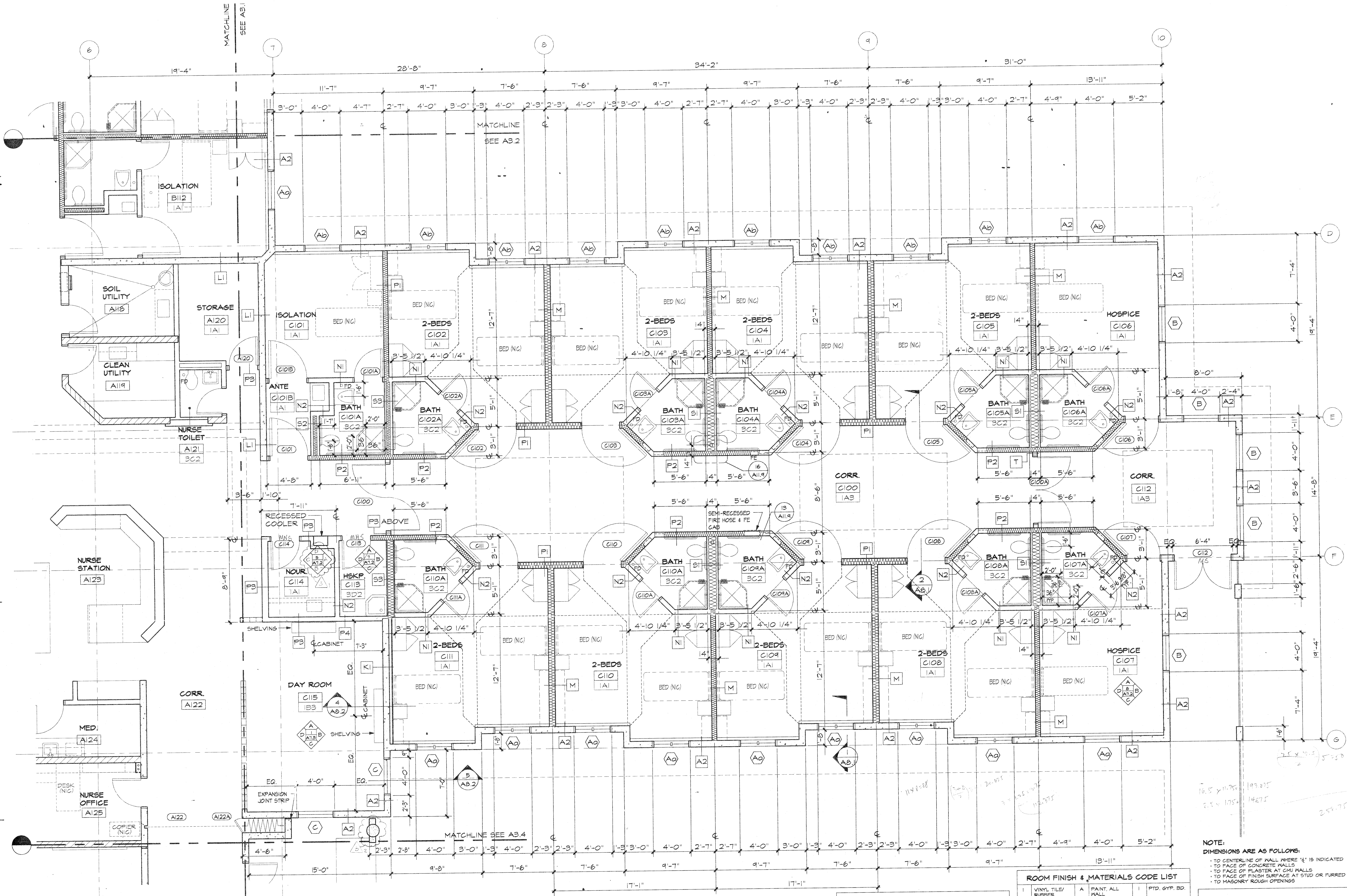
I HEREBY CERTIFY THAT THIS PLAN WAS PREPARED BY ME OR UNDER MY DIRECT SUPERVISION.

Project:
GMH
LONG TERM
CARE FACILITY

BARRIGADA, GUAM

Title:
PARTIAL GROUND
FLOOR PLAN -
B-WING

Designed: RS
Drawn: Ian
Checked: VT / MGS
Supv: RS
Scale: 1/4"=1'-0"
Date: 2 AUG 93
Project No. 3116 AutoCAD File A3-2
Drawing No. **A3.2**
Sheet No. of



1 DETAILED PLAN - GROUND FLOOR C-WING
SCALE: 1/4"=1'-0"

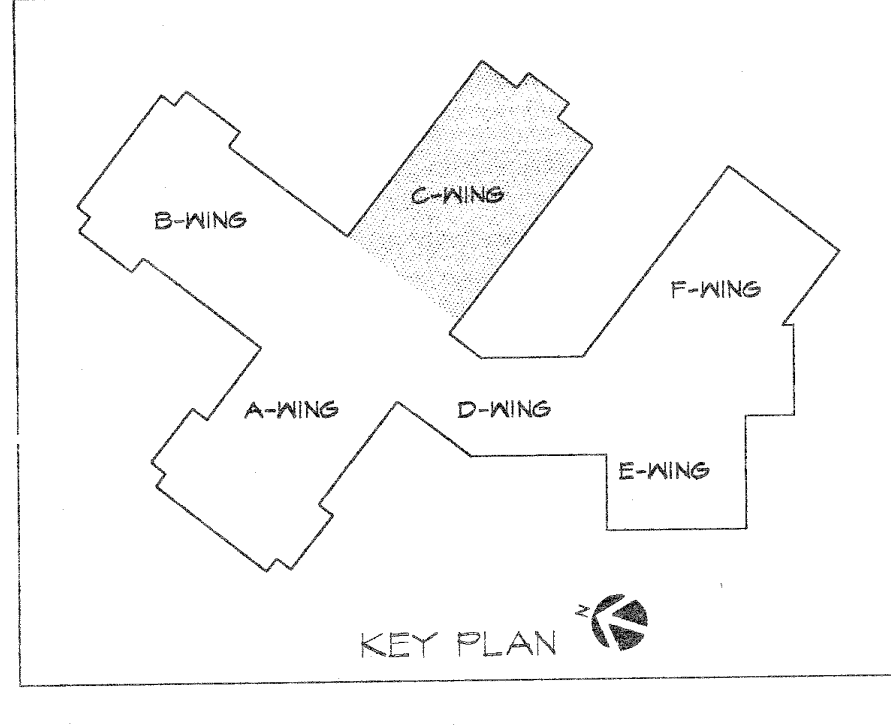
PARTITION TYPES

	TYPICAL CONCRETE WALL. SEE STRUCT. DINGS. SEE WALL TYPE FOR FINISH.
	TYPICAL CONCRETE UNIT MASONRY WALL. SEE STRUCT. DINGS. SEE WALL TYPE FOR FINISH.
	TYPICAL METAL STUD WALL. SEE WALL TYPE FOR FINISH.
	TYPICAL METAL STUD CHASE WALL. SEE WALL TYPE FOR FINISH.
	TYPICAL METAL STUD WALL W/ACOUSTICAL INSUL. SEE WALL TYPE FOR FINISH.

ROOM FINISH & MATERIALS CODE LIST

1 VINYL TILE / RUBBER BASE	A PAINT, ALL WALLS	1 PTD. GYP. BD. PTD.
2 CARPET / RUBBER BASE	B PAINT B WALLS	2 W.R. GYP. BD. PTD.
3 CER. TILE / CER. TILE GFT-1	C CER. TILE GFT-1	3 SUSP. ACQST. TILE # 4 PTD. (AS NOTED ON PLANS)
4 SEALED CONG.	D PTD. W.R. GYP. BD. CER. TILE TO 4'-0" GFT-1	4 SUSP. ACQST. TILE # 2
5 PORCELAIN CER. TILE + CARPET / WOOD BASE	E	5 PTD. CONG.
6 SEAMLESS FLOORING	F	6 WOOD PANELING
7 PORCELAIN CER. TILE / WOOD BASE		7 SUSP. ACQST. TILE # 3

NOTE:
DIMENSIONS ARE AS FOLLOWS:
• TO CENTERLINE OF WALL WHERE 'C' IS INDICATED
• TO FACE OF CONCRETE WALLS
• TO FACE OF FLASTER AT CHU WALLS
• TO FACE OF FINISH SURFACE AT STUD OR FURRED WALLS
• TO MASONRY ROUGH OPENINGS



REVISIONS		
No.	Description	Date
22	APPENDUM 1	5-17-93

TRSSA
Taniguchi-Ruth-Smith + Associates
Members of the American Institute of Architects
100 CSE Business Center, P.O. Box 85, Agaña, GU 96931
Tel: (787) 475-8972 • Fax: (787) 475-3881

Architecture
Planning
Interior Design

CERTIFICATE
No. 177
TERRITORY
OF
GUAM
REGISTERED ARCHITECT
DATE: 8/3/93

I HEREBY CERTIFY THAT THIS PLAN WAS PREPARED BY ME OR UNDER MY DIRECT SUPERVISION.

Project:
SMH
LONG TERM
CARE FACILITY

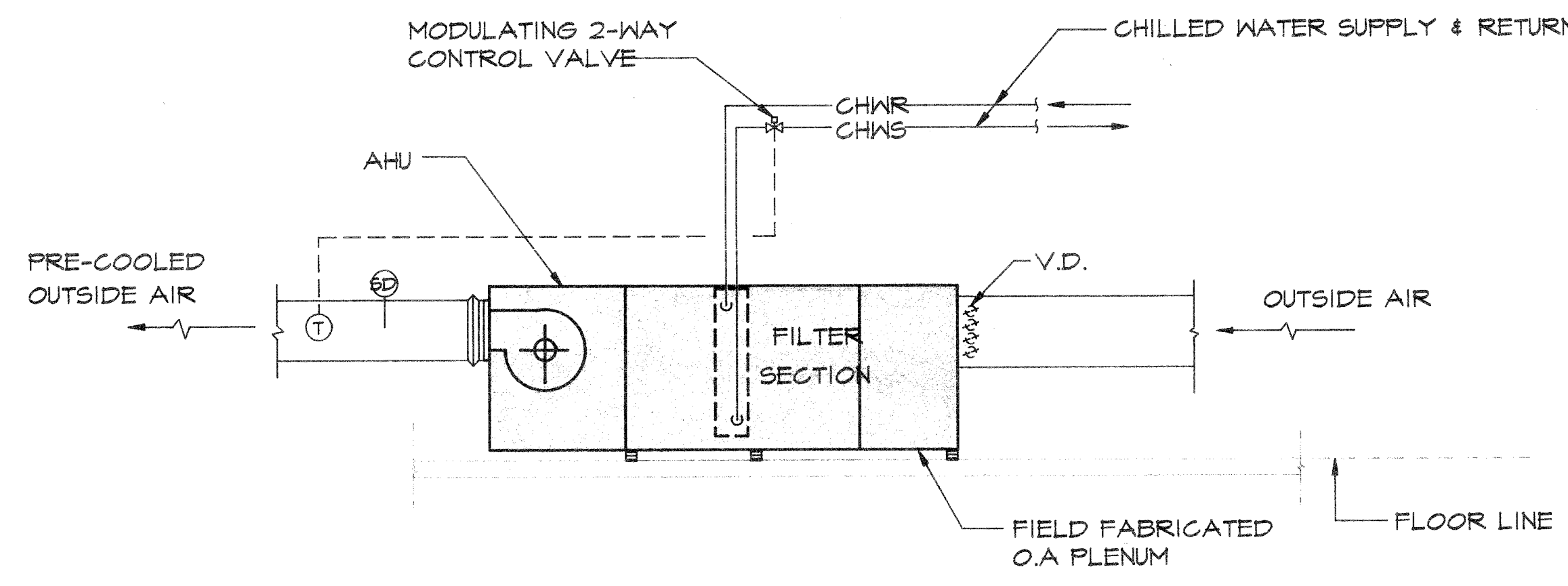
BARRIGADA, GUAM

Title:
PARTIAL GROUND
FLOOR PLAN -
C-WING

Designed: RS
Drawn: Ian
Checked: VT / MGS
Supv: RS
Scale: 1/4"=1'-0"
Date: 2 AUG 93
Project No. 9116 AutoCAD File A3-3
Drawing No. **A3.3**
Sheet No. of

SEQUENCE OF OPERATION :

- OPERATION OF AIR HANDLING UNIT SHALL BE THROUGH PUSH BUTTON START/STOP SWITCH INTEGRAL TO STARTER.
- TEMPERATURE CONTROL WILL BE THROUGH DUCT THERMOSTAT (T) OPERATING 2-WAY CONTROL VALVE TO MAINTAIN PRE-COOLED OUTSIDE AIR AT 5°F ± 2°F
- SMOKE DETECTOR (SD) SHALL TURN-OFF AHU WHEN PRODUCTS OF COMBUSTION ARE DETECTED IN AIR STREAM.

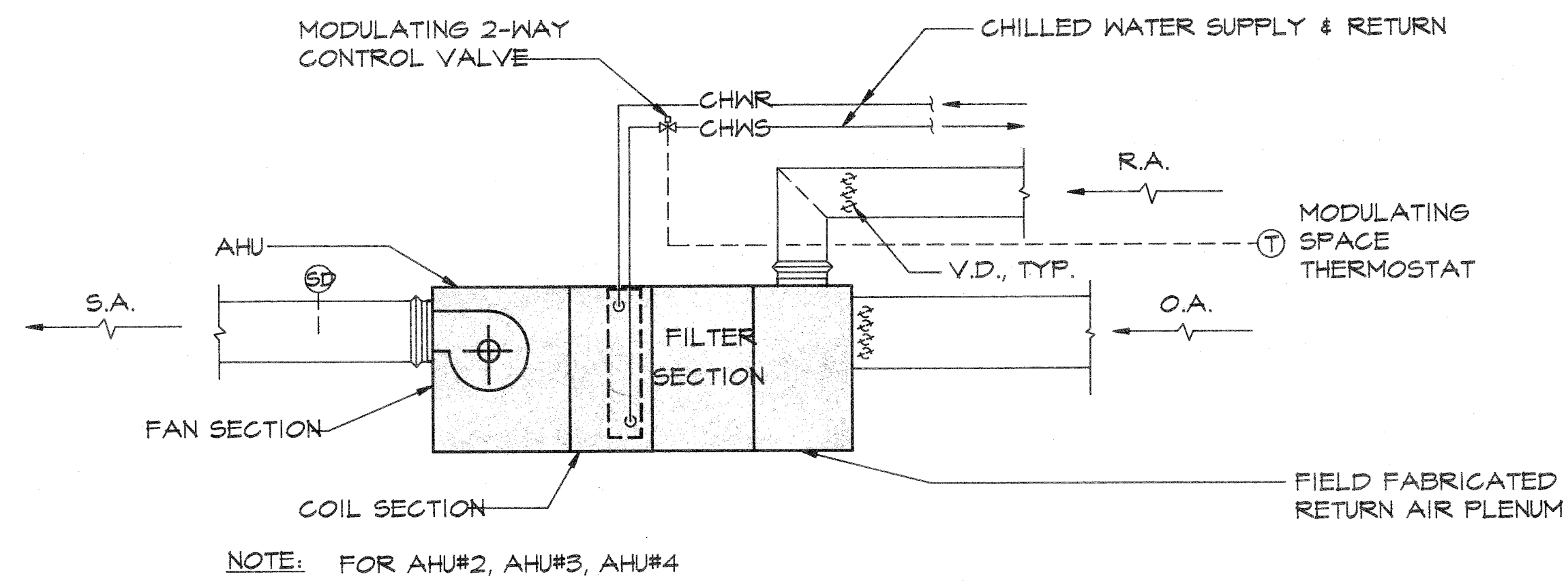


NOTE: FOR AHU#5 (PRE-COOLING UNIT)

3 AHU TEMPERATURE CONTROL SCHEMATIC DIAGRAM
 MB.2 NOT TO SCALE

SEQUENCE OF OPERATION :

- OPERATION OF AIR HANDLING UNIT SHALL BE THROUGH PUSH BUTTON START/STOP SWITCH INTEGRAL TO STARTER.
- TEMPERATURE CONTROL WILL BE THROUGH THERMOSTAT (T), OPERATING 2-WAY CONTROL VALVE TO MAINTAIN SPACE TEMPERATURE AT 75°F ± 2° F.
- SMOKE DETECTOR (SD) SHALL TURN-OFF AHU WHEN PRODUCTS OF COMBUSTION ARE DETECTED IN AIR STREAM.

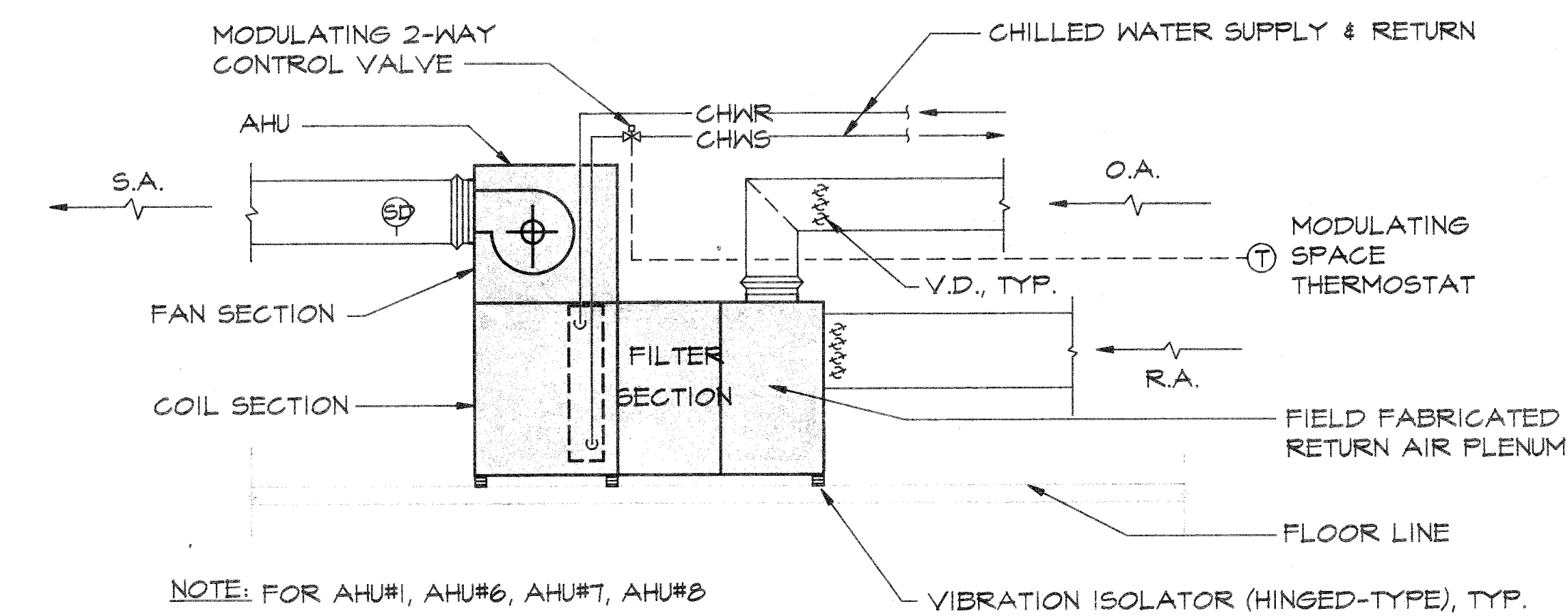


NOTE: FOR AHU#2, AHU#3, AHU#4

2 AIR HANDLING UNIT TEMPERATURE CONTROL SCHEMATIC DIAGRAM
 MB.2 NOT TO SCALE

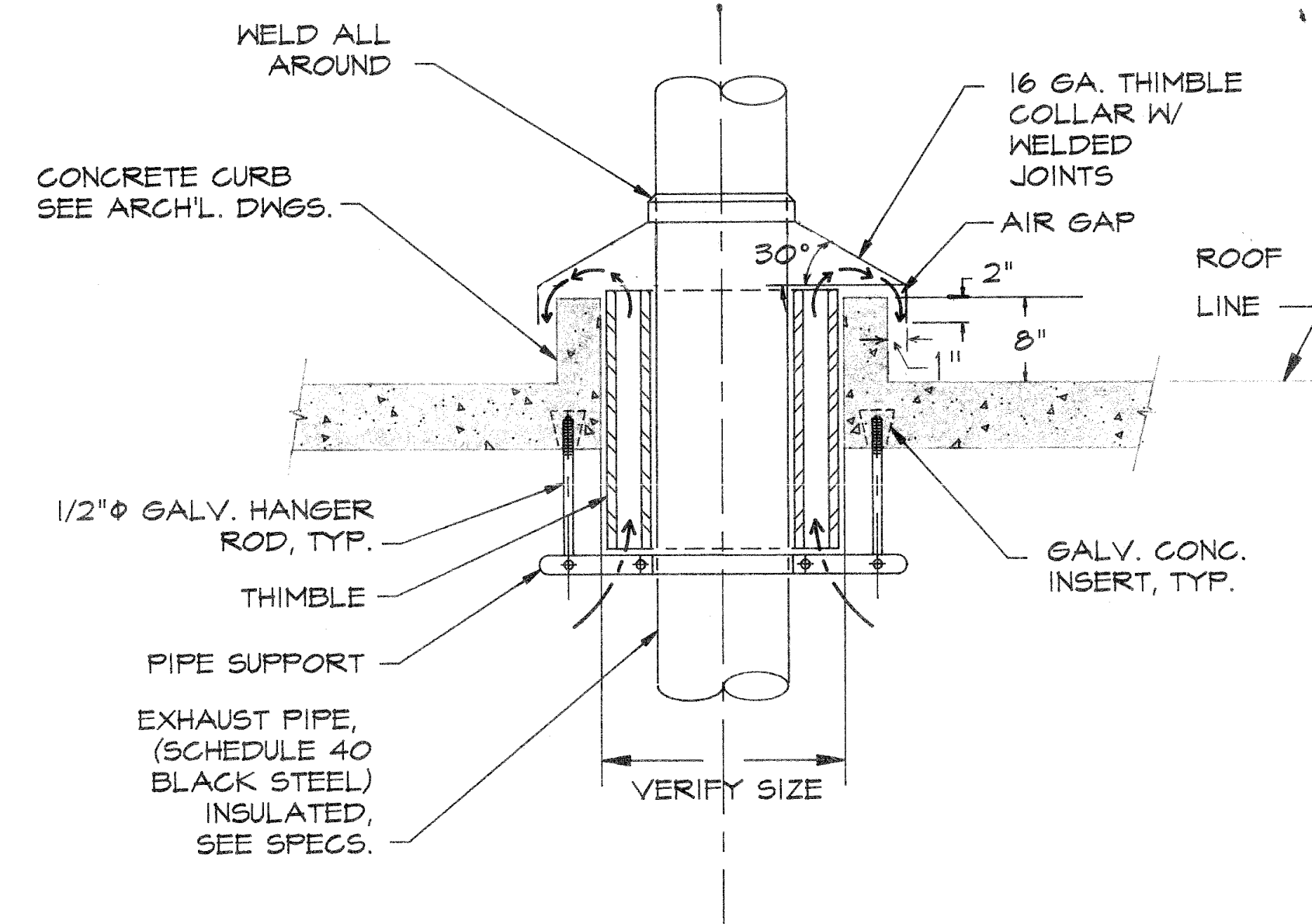
SEQUENCE OF OPERATION :

- OPERATION OF AIR HANDLING UNIT SHALL BE THROUGH PUSH BUTTON START/STOP SWITCH INTEGRAL TO STARTER.
- TEMPERATURE CONTROL WILL BE THROUGH THERMOSTAT (T), OPERATING 2-WAY CONTROL VALVE TO MAINTAIN SPACE TEMPERATURE AT 75°F ± 2° F.
- SMOKE DETECTOR (SD) SHALL TURN-OFF AHU WHEN PRODUCTS OF COMBUSTION ARE DETECTED IN AIR STREAM.

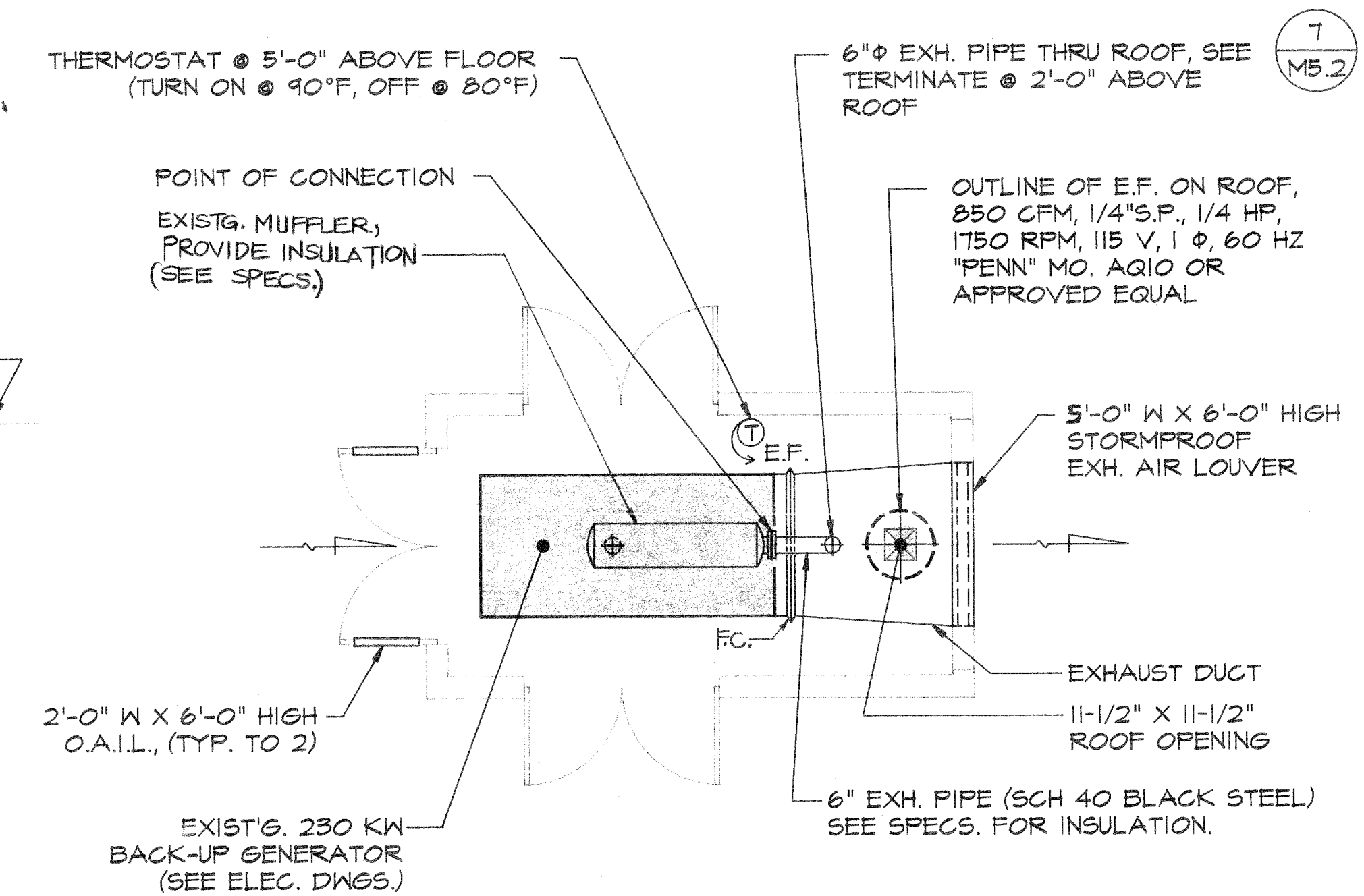


NOTE: FOR AHU#1, AHU#6, AHU#7, AHU#8

1 TYPICAL AHU TEMPERATURE CONTROL SCHEMATIC DIAGRAM
 MB.2 NOT TO SCALE



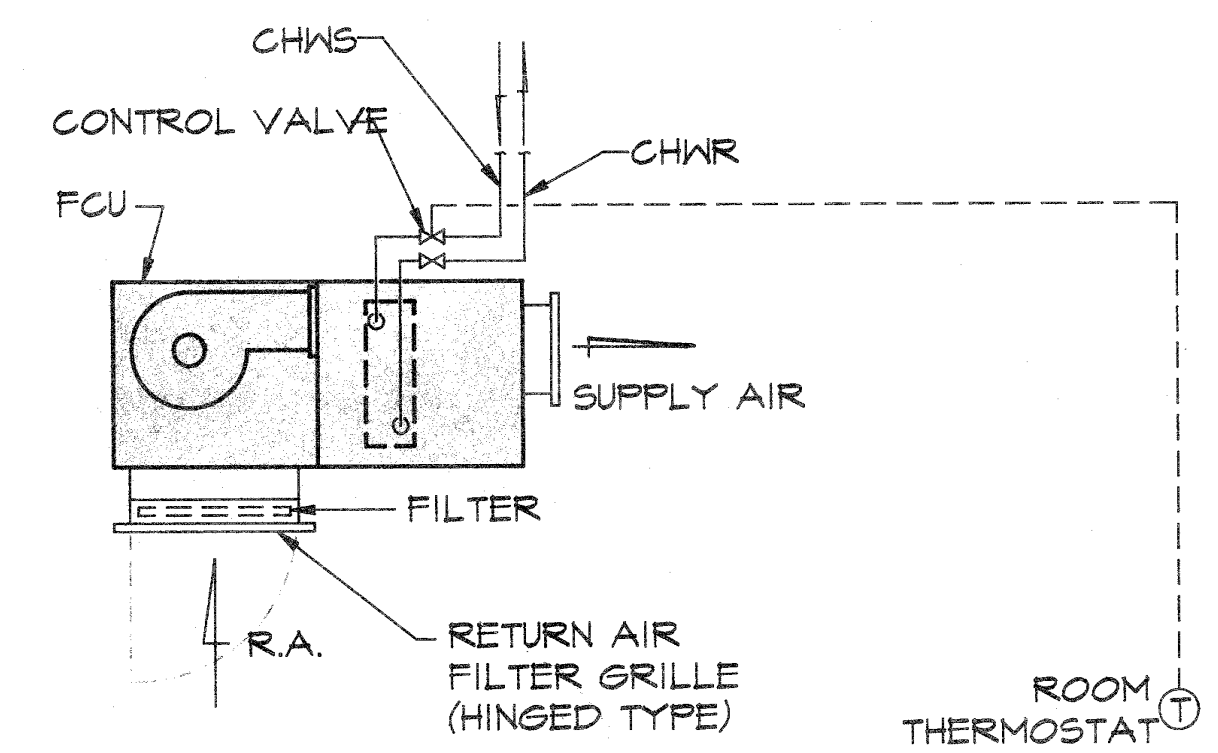
7 EXHAUST PIPE THRU ROOF DETAIL
 MB.2 NOT TO SCALE



6 PLAN
 MB.2 SCALE: 1/4" = 1'-0"

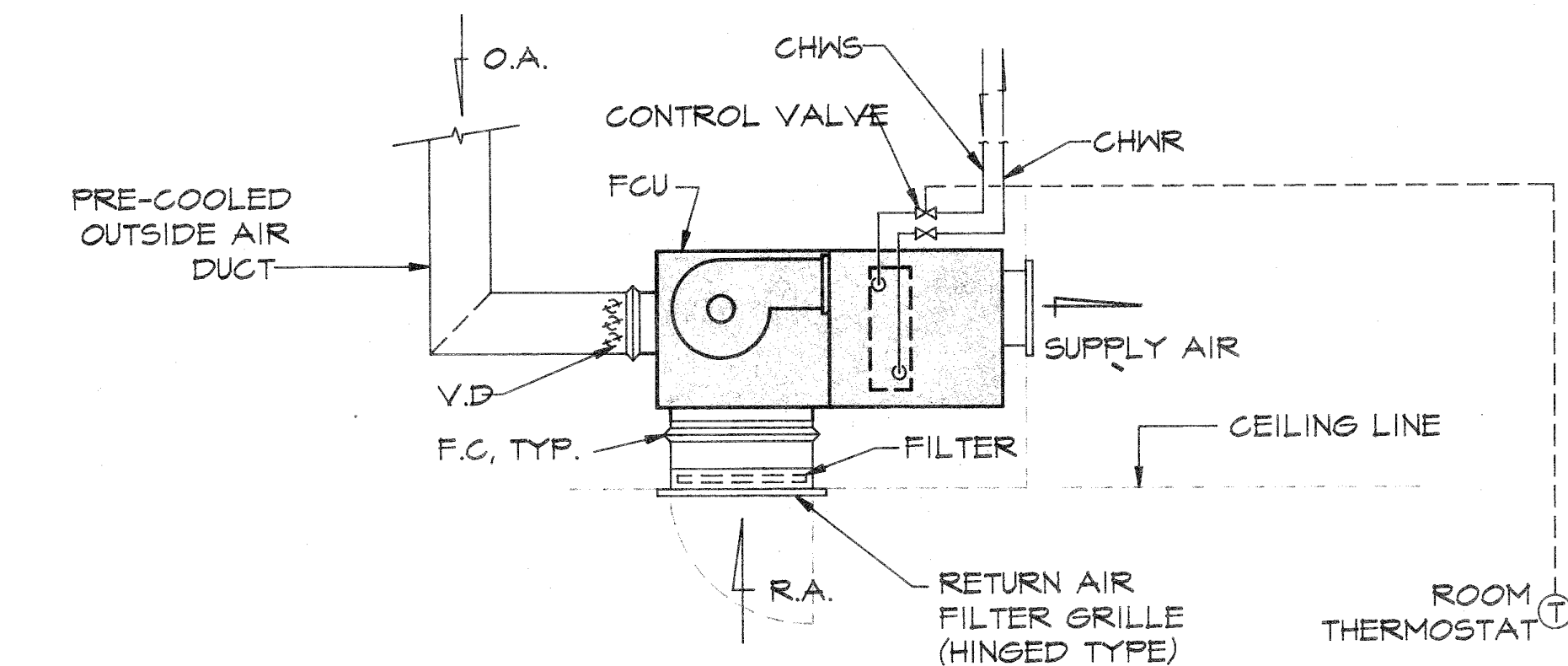
SEQUENCE OF OPERATION:

- FAN COIL UNIT (FCU) SHALL BE STARTED/STOPPED MANUALLY THRU ITS FAN SWITCH INTEGRAL TO ROOM THERMOSTAT (T) WHICH MAINTAINS ROOM TEMPERATURE AT 75°F ± 2°F THRU CHILLED WATER CONTROL VALVE.



NOTE: FOR FCU#4 & FCU#5

5 TEMPERATURE CONTROL SCHEMATIC DIAGRAM
 MB.2 NOT TO SCALE



SEQUENCE OF OPERATION:

- FAN COIL UNIT SHALL BE STARTED/STOPPED MANUALLY THRU ITS FAN SWITCH INTEGRAL TO ROOM THERMOSTAT (T) WHICH MAINTAINS ROOM TEMPERATURE AT 75°F ± 2°F THRU CHILLED WATER CONTROL VALVE.

NOTE: FOR FCU#1 & FCU#3

4 TEMPERATURE CONTROL SCHEMATIC DIAGRAM
 MB.2 NOT TO SCALE

REVISIONS		
No.	Description	Date

TRSI/A
 Tanguchi-Ruth-Smith
 Associates
 100 Cliff Boulevard, Suite 400, Guam, 96901
 Telephone: (714) 777-1225 / 477-9238 • Fax: (714) 777-3381

Architecture
 Planning
 Interior Design

EMC
 MECHANICAL INC.
 1158E PLAZA, SUITE B-105
 P.O. BOX 23156
 GUMF, GUAM 96921
 TEL: (671) 646-1558 / 5363
 FAX: (671) 646-8606

PROFESSIONAL ENGINEER
 TERRITORY OF GUAM
 No. 209
 I HEREBY CERTIFY THAT THIS PLAN WAS PREPARED BY ME OR UNDER MY DIRECT SUPERVISION
 DATE: 8/2/13

Project:
 GMH
 LONG TERM
 CARE FACILITY

BARRIGADA, GUAM

Title:
 SCHEMATIC CONTROL
 DIAGRAMS, BACK-UP
 GENERATOR PLAN & DETAIL

Designed: RJP
 Drawn: ARNOLD
 Checked: CGV
 Supv: RJP
 Scale: NONE
 Date: 2 AUGUST 98
 Project No. AutoCAD File
 Drawing No.
 M5.2
 Sheet No. of

